

Pine Research Electrode Polishing Guide

Pine Research offers a kit (part number AKPOLISH) containing various polishing materials manufactured by Buehler, Ltd. (www.buehler.com). This kit contains solutions of finely ground aluminum oxides (alumina) compounds and polishing cloths that can be used to re-polish your electrode after use. There are as many different options about the best way to polish electrodes as there are electrochemists in the world. The advice provided here comes from the machinists at Pine Research who make the electrodes.

1. Polishing Kit Contents Overview

The electrode polishing kit from Pine Research (Part Number: AKPOLISH) includes the following items: adhesive backed micropolishing pads, adhesive backed Nylon polishing pads, 600 grit silicon carbide abrasive paper, and three bottles of alumina slurry suspension (5 μm , 0.3 μm , and 0.05 μm) (see: Figure 1).



Figure 1. Contents of the Pine Research Electrode Polishing Kit.

2. General Polishing and Cleaning Instructions

Electrode polishing is broken down into three broad categories, based on the aggressiveness and extent of cleaning that results. In general, the gentlest polish is sufficient for most cleaning and polishing needs. It is recommended that a unique polishing pad be used for each grit of alumina. Extend the life time of a single polishing pad by using only a small area of it each time, and moving around the pad with each successive use.

2.1 Routine Cleaning

Routine cleaning is recommended as a way to simply touch up the electrode surface after a few uses. This type of cleaning and polishing can be performed on a daily basis. Routine cleaning may not be appropriate for all applications, however it is the gentlest category of cleaning discussed. Follow these steps:

1. Remove the backing and affix a piece of microfiber polishing cloth to a still flat surface. Commonly, this is a thicker sheet of glass or polymer, dedicated to electrode polishing.
2. Dispense a small volume of $0.05\ \mu\text{m}$ alumina slurry onto the micro cloth. In general, about $3\ \text{mm}$ round spot is sufficient.
3. Polish the electrode against the slurry, keeping the electrode surface parallel to the surface of the cloth. A figure-8 pattern while gently turning the electrode is a useful technique.
4. Clean the alumina particles off the electrode using distilled water.
5. *OPTIONAL:* Rinse the electrode surface in an ultrasonication bath (containing distilled water) for a 1-5 minutes to shake loose any alumina particles. Be sure to suspend only the electrode surface in solution, perhaps by using a ring stand and clamp (i.e. do not place the entire assembly into the ultrasonication bath).

2.2 Periodic Cleaning

Periodic cleaning starts with first polishing the electrode with $0.3\ \mu\text{m}$ alumina on micro cloth, which offers a bit more aggressive surface polishing, followed by a routine cleaning with $0.05\ \mu\text{m}$ alumina. A periodic cleaning can be performed as often as several times per week, based on the conditions in which the electrode has been used and the surface chemistry that has resulted during use. Follow these steps:

1. Remove the backing and affix a piece of micro cloth polishing cloth to a still flat surface. Commonly, this is a thicker sheet of glass or polymer, dedicated to electrode polishing.
2. Dispense a small volume of $0.3\ \mu\text{m}$ alumina slurry onto the micro cloth. In general, about $3\ \text{mm}$ round spot is sufficient.
3. Polish the electrode against the slurry, keeping the electrode surface parallel to the surface of the cloth. A figure-8 pattern while gently turning the electrode is a useful technique.
4. Clean the alumina particles off the electrode using distilled water.
5. *OPTIONAL:* Rinse the electrode surface in an ultrasonication bath (containing distilled water) for a 1-5 minutes to shake loose any alumina particles. Be sure to suspend only the electrode surface in solution, perhaps by using a ring stand and clamp (i.e. do not place the entire assembly into the ultrasonication bath).
6. Perform a Routine Cleaning with $0.05\ \mu\text{m}$ alumina (as described in Section 2.1).

2.3 Aggressive Cleaning

A more aggressive cleaning would involve polishing first with $5.0\ \mu\text{m}$ alumina on a Nylon pad, followed by $0.3\ \mu\text{m}$ alumina, and finally, with the $0.05\ \mu\text{m}$ alumina. This type of cleaning will take a lot longer than a routine cleaning, as it involves three distinct steps, each taking from 5 to 10 minutes depending on the condition of the electrode. Pine Research recommends that this level of cleaning only be performed if the electrode surface is contaminated, species have non-specifically adsorbed to the surface or there is visible material remaining on the electrode surface.

1. Remove the backing and affix a Nylon polishing pad to a stiff flat surface. Commonly, a thicker sheet of glass or polymer, dedicated to electrode polishing, is used solely for electrode polishing.
2. Dispense a small volume of $5\ \mu\text{m}$ alumina slurry onto the Nylon. In general, about $3\ \text{mm}$ round spot is sufficient.
3. Polish the electrode against the slurry, keeping the electrode surface parallel to the surface of the cloth. A figure-8 pattern while gently turning the electrode is a useful technique.
4. Clean the alumina particles off the electrode using distilled water.
5. *OPTIONAL:* Rinse the electrode surface in an ultrasonic bath (containing distilled water) for a 1-5 minutes to shake loose any alumina particles. Be sure to suspend only the electrode surface in solution, perhaps by using a ring stand and clamp (i.e. do not place the entire assembly into the ultrasonic bath).
6. Perform a Periodic Cleaning with $0.3\ \mu\text{m}$ alumina (as described in Section 2.2).
7. Perform a Routine Cleaning with $0.05\ \mu\text{m}$ alumina (as described in Section 2.1).

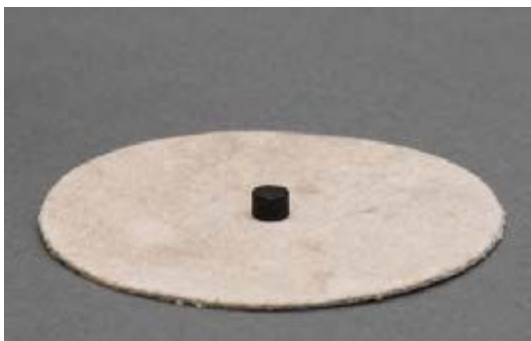
2.4 Complete Re-polish

A complete re-polish is very time consuming and a labor intensive process. Pine Research **DOES NOT RECOMMEND** a complete re-polish unless the electrode has suffered major damage. You should consider sending such a damaged electrode to Pine Research for evaluation and possible repair as a safer option. Each complete re-polish of an electrode greatly reduces its useful lifetime because it removes a significant amount of precious metal or carbon from the surface of the electrode. A complete re-polish removes anywhere from $250\ \text{to}\ 500\ \mu\text{m}$ of material from the surface of the disk. You can typically perform 7 to 15 complete re-polish operations before you hit stainless steel and/or silver conductive epoxy. Once you hit steel or epoxy, your electrochemical response will begin to look strange and it is time to throw away the electrode. This is the ultimate fate of all electrodes.

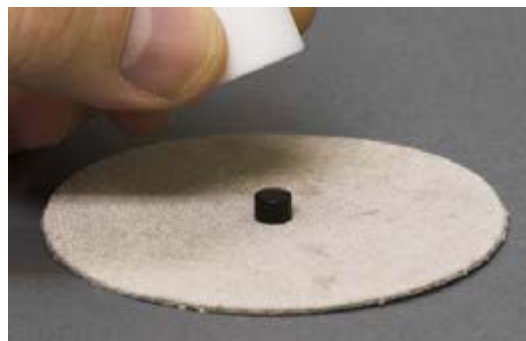
1. Remove the backing and affix a piece of 600 grit sandpaper to a stiff flat surface. Commonly, a thicker sheet of glass or polymer, dedicated to electrode polishing, is used solely for electrode polishing.
2. Add a small volume of deionized water to the pad. Polish the electrode against the sandpaper, keeping the electrode surface parallel to the surface of the cloth. A figure-8 pattern while gently turning the electrode is a useful technique.
3. Clean the any particles off the electrode using distilled water.
4. *OPTIONAL:* Rinse the electrode surface in an ultrasonic bath (containing distilled water) for a 1-5 minutes to shake loose any particles. Be sure to suspend only the electrode surface in solution, perhaps by using a ring stand and clamp (i.e. do not place the entire assembly into the ultrasonic bath).
5. Perform an Aggressive Cleaning with $5\ \mu\text{m}$ alumina (as described in Section 2.3).
6. Perform a Periodic Cleaning with $0.3\ \mu\text{m}$ alumina (as described in Section 2.2).
7. Perform a Routine Cleaning with $0.05\ \mu\text{m}$ alumina (as described in Section 2.1).

2.5 Polishing Change Disk Inserts

Pine offers RDE and RRDE tips that permit the disk material to be removed from the electrode tip. For these types of tips, it is often preferable to remove the disk material and polish it separately. Pine offers special tools for removing and polishing these disk inserts. The images and directions that follow illustrate how to perform the previously mentioned polishing protocols with only disk inserts (note: the appropriate Change Disk tool kit is required).



1. Place disk insert on clean polishing cloth with the polished face downwards



2. Gently bring Teflon disk holder down onto the disk insert to install the disk insert into the holder.



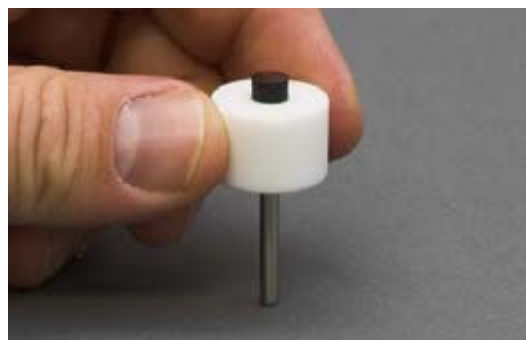
3. The disk insert is now ready to be polished in one of the methods described above.



4. Carefully push Teflon holder down until the disk and holder surfaces are flush.



5. Polish the disk against the alumina slurry using a circular or figure-8 motion while pressing down firmly.



6. After polishing, clean disk thoroughly and eject it from the holder using the push rod.